

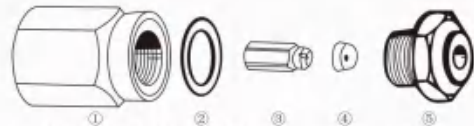
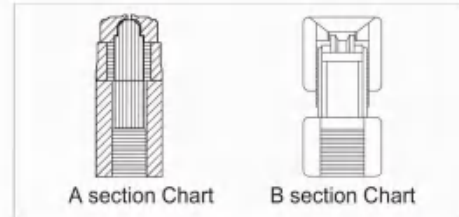
## K5 Spray-Dry Nozzle

The nozzle body is mainly made of stainless steel, with harden SS, alloy or gem for accessories. With a swirl leading chest inside, the liquid is changed into centrifugal mist with little spraying drop. It can close contact with hot air, and widely applied in food, ceramic, pharmacy, Chemical, dyeing and metallurgy, etc.



### K5 for drying spraying Nozzle

K5 Series					
Structure	SS 303 for nozzle body, and selective materials for cover, taper or spray hole.				
Material	SS303, SS316, Harden SS, Alloy or Gem				
A Spec	Inlet joint female/male screw thread		Size		
	1/4Inch	3/8Inch	(mm)A Hexagon 25.4	B length 41.5or47.6	Net Weight 0.142/0.1156



1, Holder 2, Sealing Cushion 3, Rotary Core 4, Inlayer 5, Nozzle tip  
Dry Nozzle Head Diagram

### Performance Data

Inlet conn NPT or BSPT(M)	Capacity	Rating Spray Hole Dia (mm)	Capacity (L/min)															
			3Bar	4Bar	5.5Bar	7Bar	10Bar	15Bar	20Bar	35Bar	50Bar	70Bar	100Bar	135Bar	170Bar	210Bar	275Bar	340Bar
1/4	1	1.4	0.67	0.77	0.91	1.0	1.2	1.5	1.7	2.3	2.7	3.2	3.9	4.5	5.1	5.6	6.4	7.1
			68°	72°	73°	74°	75°	76°	71°	67°	62°	57°	55°	53°	51°	50°	48°	46°
1/4	1.5	1.8	1.1	1.2	1.4	1.6	1.9	2.4	2.8	3.6	4.4	5.1	6.2	7.2	8.0	8.9	10.2	11.4
			78°	82°	83°	84°	80°	77°	75°	72°	65°	59°	57°	55°	53°	51°	49°	47°
1/4	2	2.0	1.3	1.5	1.8	2.1	2.5	3.0	3.5	4.6	5.5	6.5	7.8	9.0	10.1	11.2	12.9	14.3
			77°	81°	81°	81°	80°	79°	73°	68°	62°	57°	55°	53°	51°	50°	48°	46°
1/4	3	2.4	2.1	2.4	2.8	3.1	3.7	4.6	5.3	7.0	8.4	9.9	11.9	13.8	15.5	17.2	20	22
			78°	79°	79°	78°	77°	76°	67°	59°	53°	48°	46°	44°	41°	39°	37°	35°
1/4	4	2.8	2.6	3.0	3.5	4.0	4.8	5.8	6.7	8.9	10.6	12.6	15.0	17.5	19.6	22	25	28
			76°	76°	77°	78°	77°	76°	67°	59°	53°	48°	46°	44°	41°	38°	35°	33°
1/4	5	3.3	3.4	3.9	4.5	5.1	6.1	7.5	8.7	11.5	13.7	16.2	19.4	23	25	28	32	36
			91°	91°	88°	86°	82°	79°	71°	63°	56°	50°	46°	45°	43°	40°	37°	34°
1/4	6	3.5	4.0	4.6	5.4	6.1	7.3	8.9	10.3	13.6	16.3	19.3	23	27	30	33	38	42
			89°	89°	86°	83°	80°	78°	69°	61°	56°	52°	48°	46°	43°	42°	40°	38°
1/4	7	3.6	4.3	5.0	5.8	6.6	7.9	9.6	11.1	14.7	17.6	21	25	29	32	36	41	46
			91°	88°	85°	83°	80°	78°	69°	60°	59°	58°	55°	53°	51°	48°	45°	42°
1/4	8	4.0	5.4	6.2	7.3	8.2	9.8	12.0	13.9	18.3	22	26	31	36	40	45	51	57
			92°	89°	86°	83°	78°	74°	65°	57°	54°	52°	51°	50°	48°	46°	44°	42°
1/4	10	4.5	7.1	8.3	9.7	10.9	13.0	16.0	18.4	24	29	35	41	48	54	60	68	76
			94°	87°	85°	83°	79°	75°	67°	59°	57°	55°	48°	46°	44°	42°	40°	38°
1/4	15	5.4	11.6	13.4	15.7	17.7	21	26	30	40	47	56	67	78	87	97	111	123
			86°	82°	80°	78°	73°	68°	60°	52°	51°	50°	46°	44°	43°	40°	36°	32°
1/4	20	6.4	17.8	21	24	27	32	40	46	61	73	86	103	119	134	149	170	189
			80°	80°	80°	80°	72°	64°	55°	47°	46°	45°	42°	39°	37°	35°	30°	32°

### Ordering info

